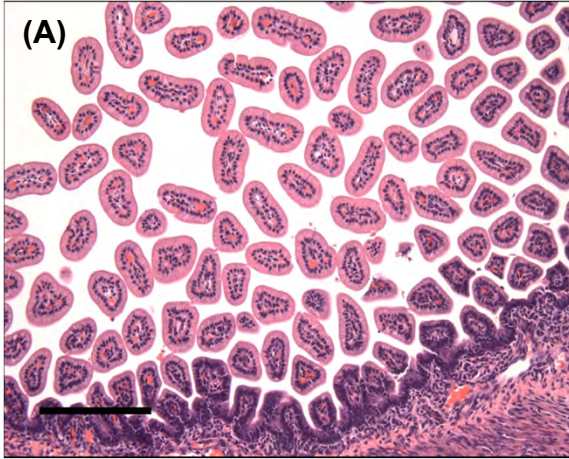
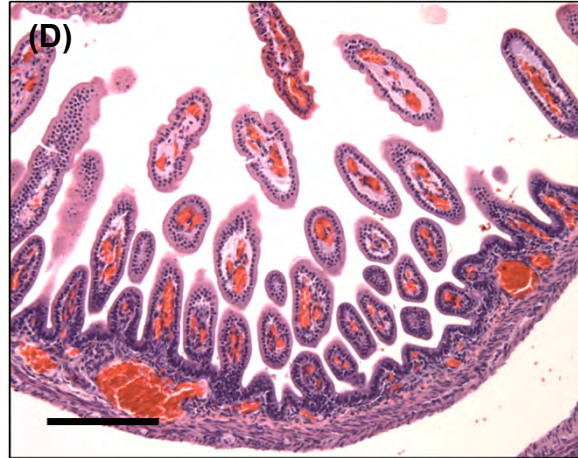


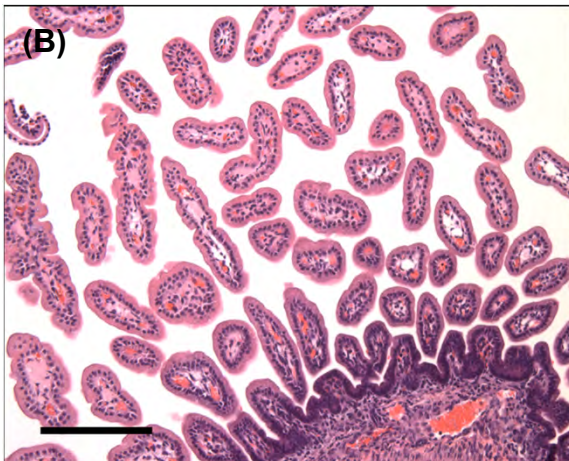
Grade 0 edema and grade 0 congestion



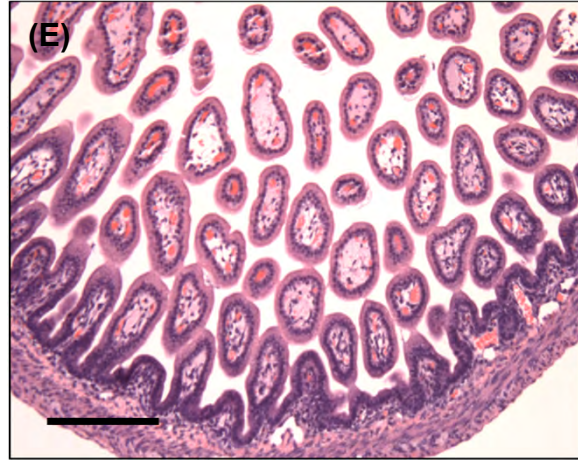
Grade 1 edema and grade 2 congestion



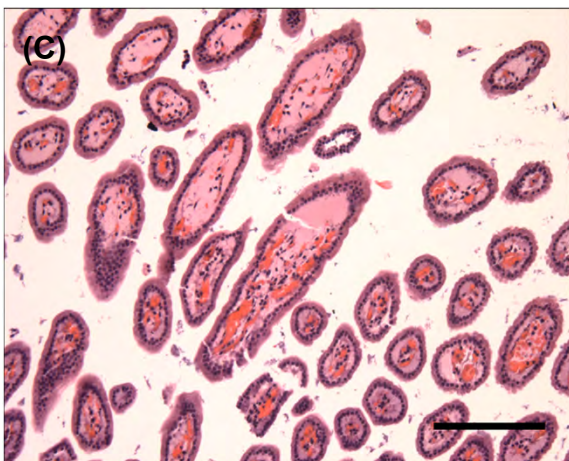
Grade 1 edema and grade 1 congestion



Grade 2 edema and grade 1 congestion



Grade 2 edema and grade 2 congestion



Grade 3 congestion

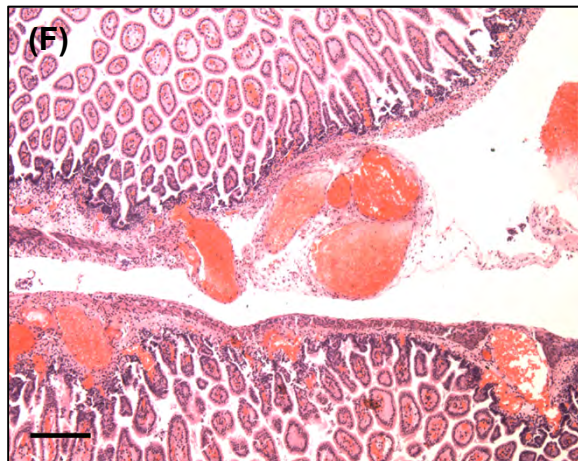


Fig S6: Scoring rubric for intestinal congestion and edema: Hematoxylin and Eosin-stained sections of the infant rabbit terminal ileum harvested at 22 h post *V. cholerae* infection showing grades 1 and 2 edema and grades 1-3 capillary congestion as noted. Pictures were taken at 20X magnification. Scale bars represent 500 μ m in A, B, C, D, E and 1mm in F.