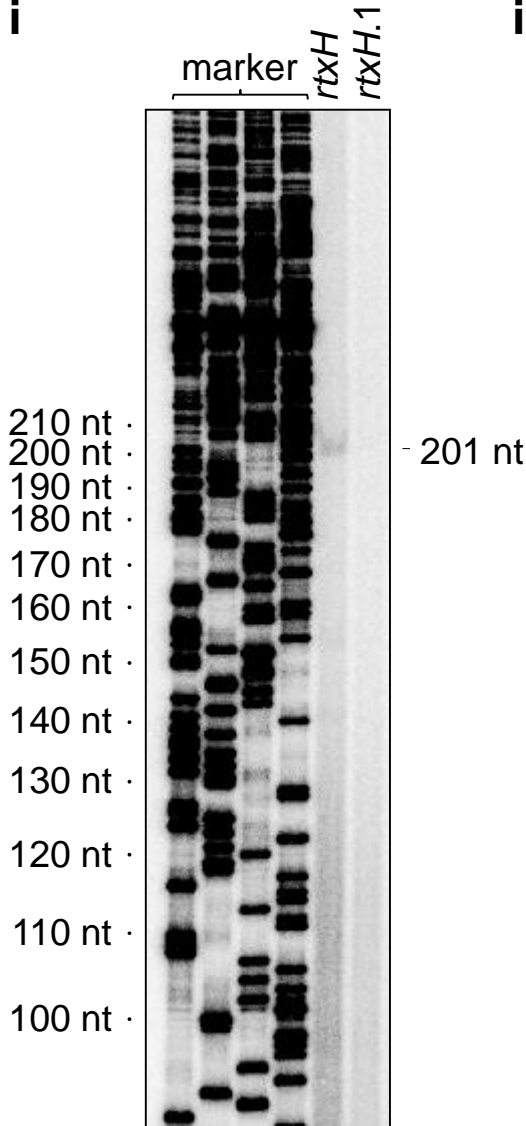


i



ii

rtxH

```

CACCGCTTGTTAACATGTTCAATCCTCAATCACCGTCAGCGT
TGTATGATAAAATGTTGAAATAGTCTATTTTGTAGTCAATTTT
GATACAAATTAATGATATGAGTCACGTTAATGTGCAATTTGT
                                     CRP1                CRP2
CTGATGGTTGCATCTGTGTGAAATTGAGGGAATACCGCACCA
TAAATTAGAATATATACTCTAATTTAATGTGTTTAAGTCGG
TTGATAGCCATGGTTTAAACGATGTAATATCCCGCCTTAAAAT
                                     PtxH →
AAATAATAACAATAATAACCCTAGGTTTGATTTGTTATATTTT
TGCCCTTTGGGCTTGCTGGGAAAGATTGGTTCATAGAAACCA
TCTTTTCATATCTGTGTAAAATAAATG
    
```

rtxH.1

```

CACCGCTTGTTAACATGTTCAATCCTCAATCACCGTCAGCGT
TGTATGATAAAATGTTGAAATAGTCTATTTTGTAGTCAATTTT
GATACAAATTAATGATATGAGTCACGTTAATGTGCAATTTGT
                                     CRP1                CRP2
CTGATGGTTGCATCTGTGTGAAATTGAGGGAATACCGCACCA
TAAATTAGAATATATACTCTAATTTAATGTGTTTAAGTCGG
TTGATAGCCATGGTTTAAAC
    
```

Figure S1a: Transcription from *PtxH* requires identified promoter elements. Panel i) shows the results of primer extension assays that detect the *rtxH* transcript derived from plasmid pRW50T carrying the *rtxH* (Panel ii, top) or *rtxH.1* (Panel ii, bottom) DNA fragment. In Panel ii) *PtxH* is highlighted blue and CRP binding sites are shown in orange.

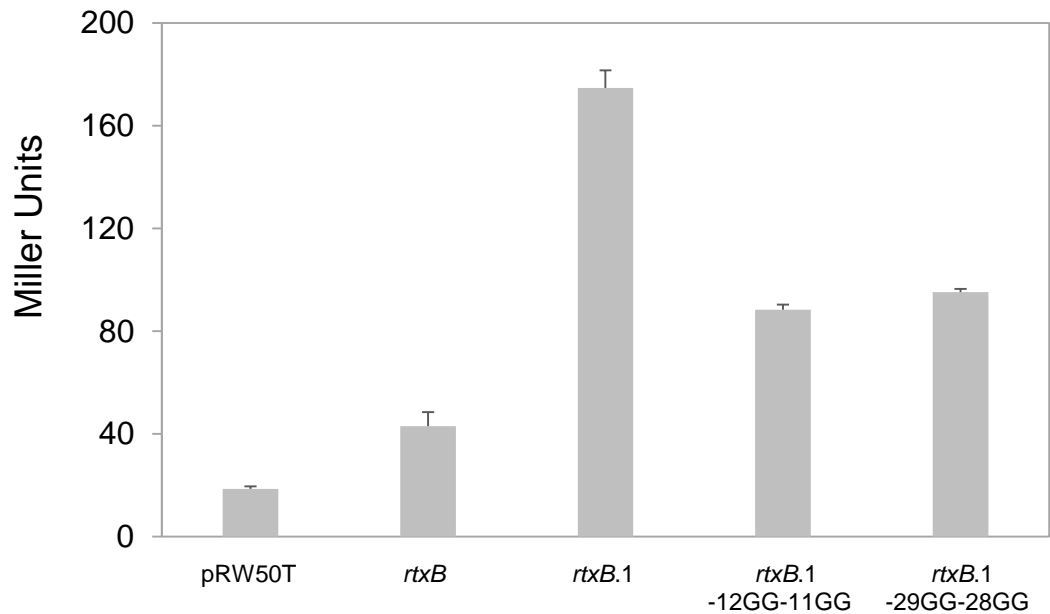
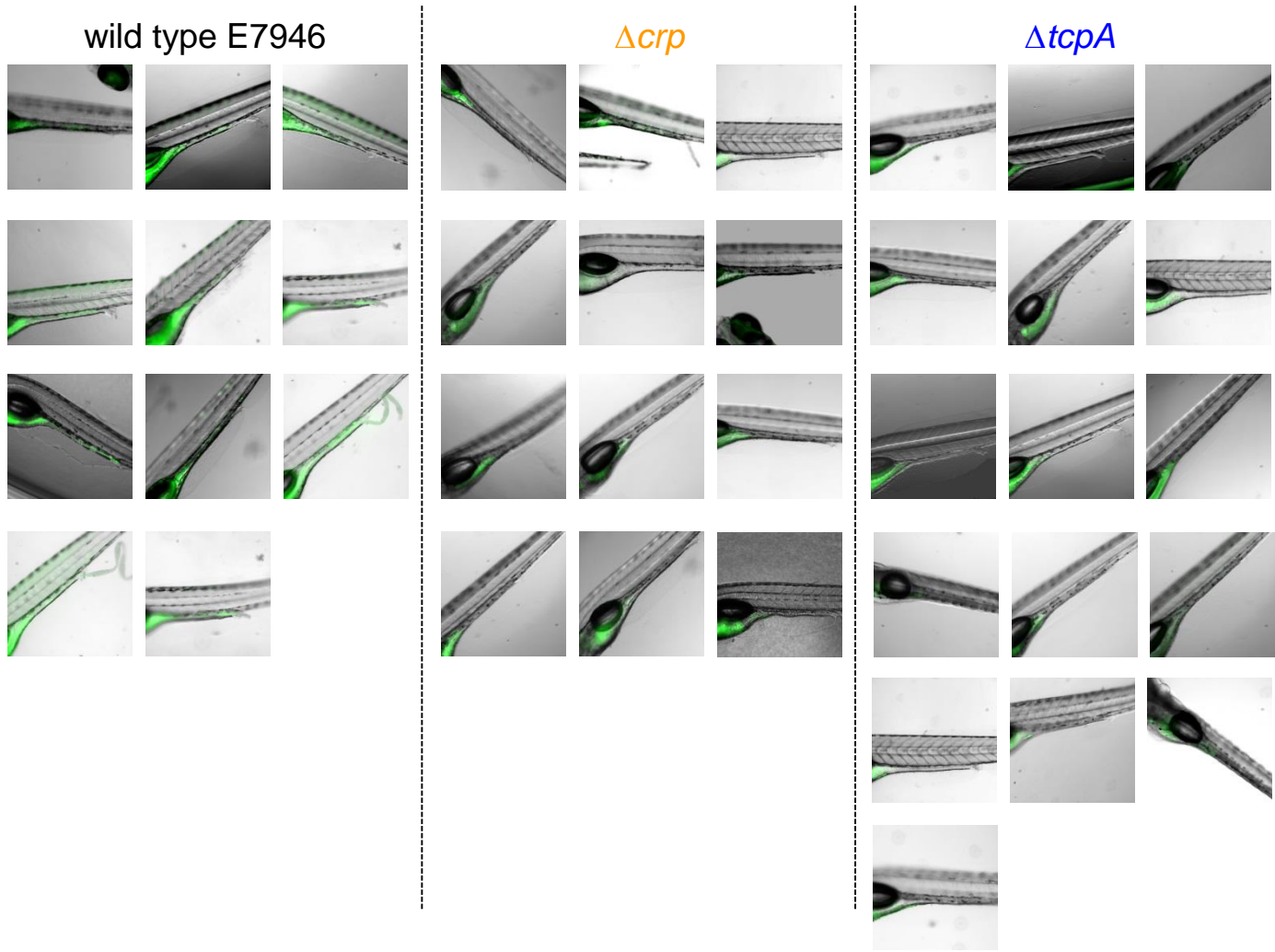


Figure S1b: P1rtxB and P2rtxB make similar contributions to *rtxB* transcription. The figure shows β -galactosidase activity measurements for lysates of *V. cholerae* cells transformed with pRW50T derivatives carrying the full length *rtxB* regulatory region (*rtxB*) a truncated derivative lacking CRP binding sites (*rtxB.1*) or versions of the truncated fragment with indicated promoter mutations.

i



ii

Average GFP Signal Intensity

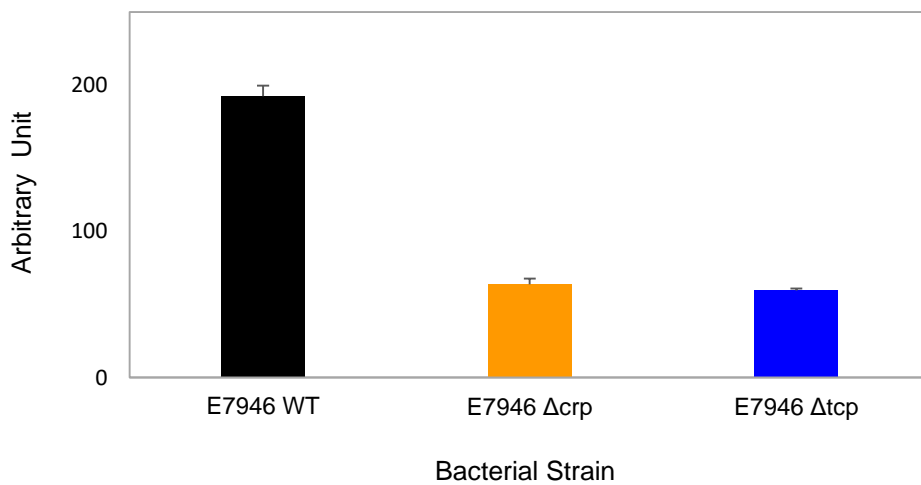


Figure S1c: Effects of *crp* and *tcpA* on zebrafish larvae colonisation. Panel i) shows images from multiple zebrafish larvae colonised with the indicated *V. cholerae* strain. All strains were transformed with plasmid pMW-GFP to facilitate visualisation of bacteria. Panel ii) shows quantified fluorescence from multiple microscopy images.

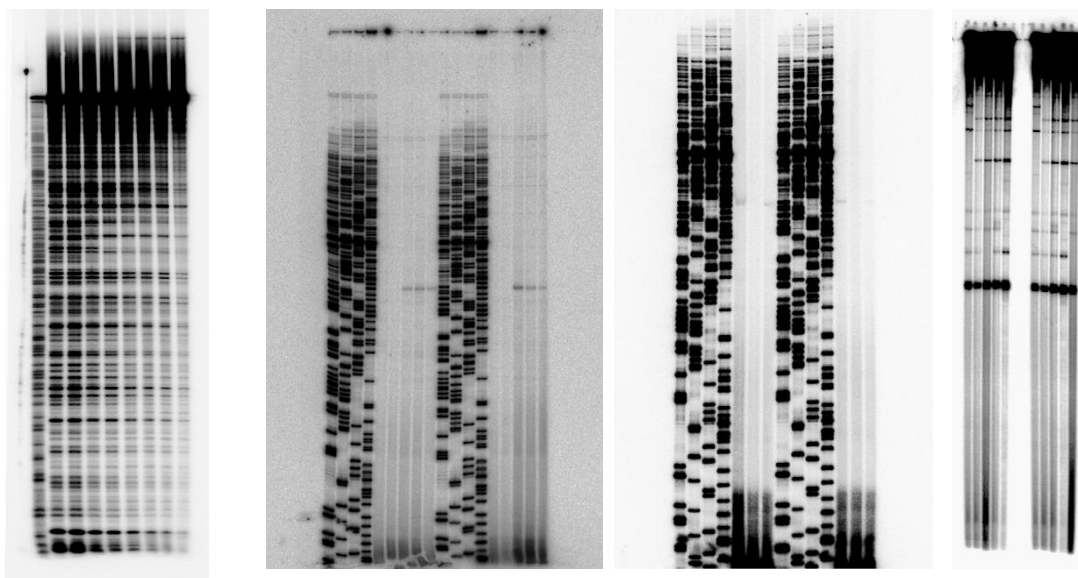


Figure S1d: Raw gel images.