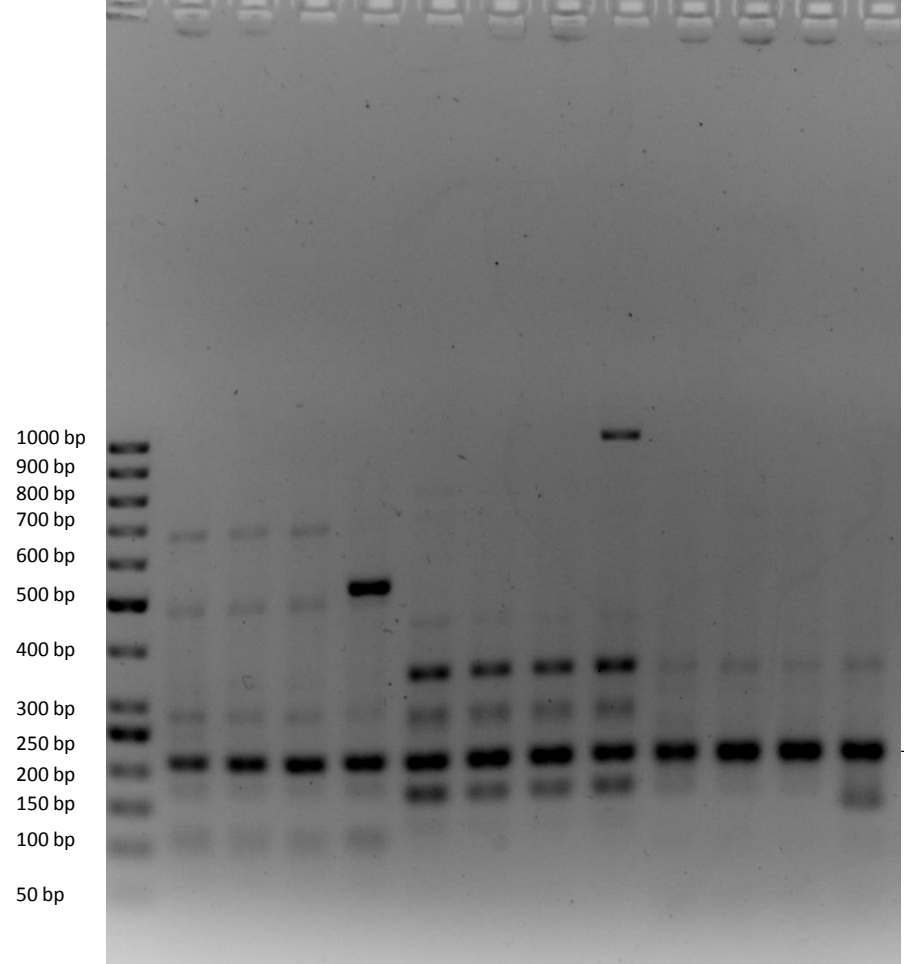


Chromosome	Region	Primer-No	expected product size [bp]
Chr 14	Subtelomeric R	2086 x 2087	900
Chr 15	Subtelomeric R	2090 x 2091	800
Chr 16	Subtelomeric R	2094 x 2095	700
Chr 17	Subtelomeric R	2098 x 2099	600
Chr 18	Subtelomeric R	2102 x 2103	500
Chr 19	Subtelomeric R	2106 x 2017	400
Chr 20	Subtelomeric R	2110 x 2111	300
Chr 21	Subtelomeric R	2114 x 2115	200

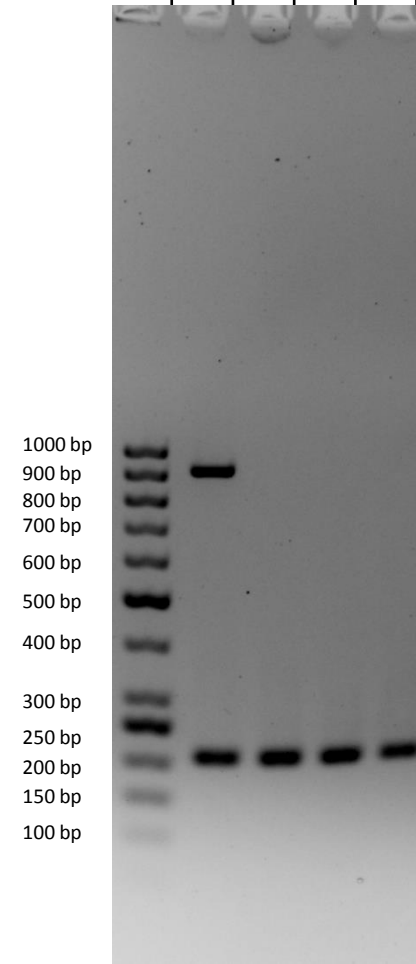
FIG S1 A Gel electrophoresis of multiplexed PCR targeting the subtelomeric region of chromosome 14-21.

Primer-No	290 x 289	293 x 294	2084 x 2085	
Expected size	517 bp	987 bp	150 bp	
Size marker	Zt260	Zt273	Zt295	IPO323
	Zt260	Zt273	Zt295	IPO323
	Zt260	Zt273	Zt295	IPO323



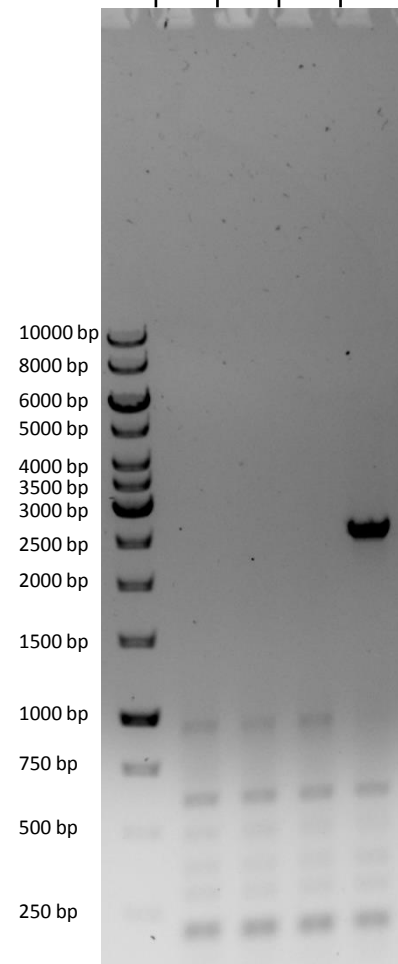
Internal PCR control
(GAPDH: Primer 879 x
880, expected size:
207 bp)

Primer-No	2086 x 2087
Expected size	900 bp
Size marker	Zt260
	Zt273
	Zt295
	IPO323



Internal PCR control
(GAPDH: Primer 879 x
880, expected size:
207 bp)

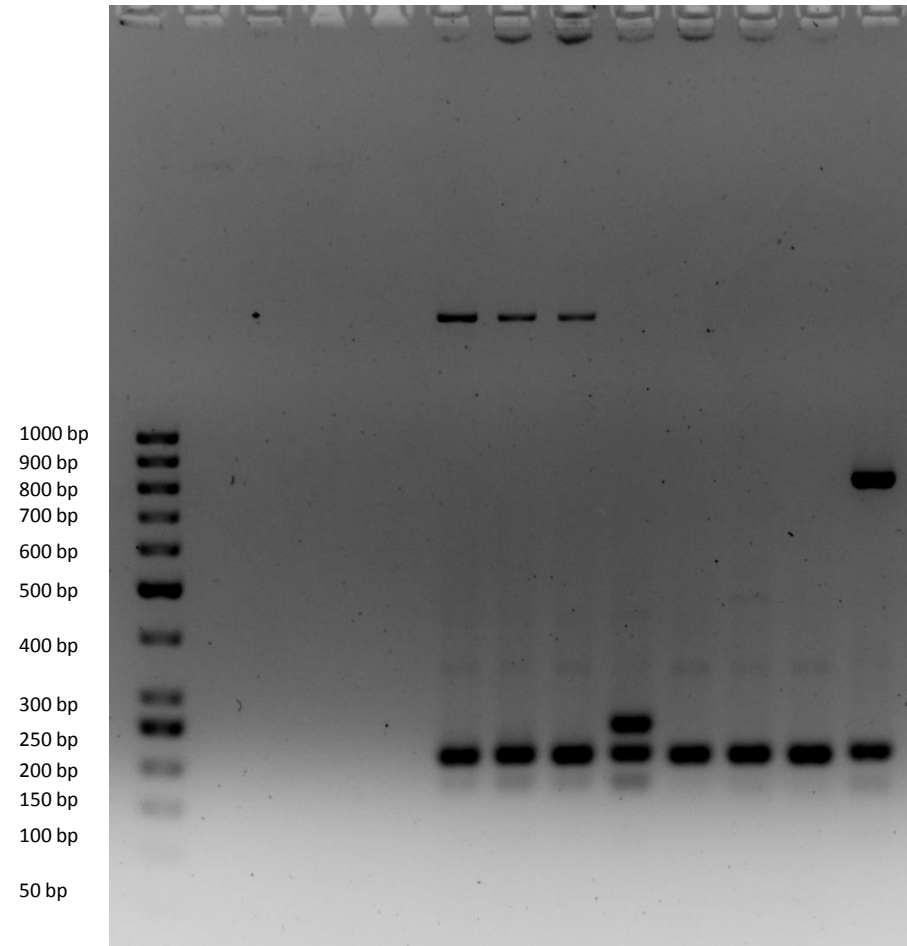
Primer-No	2000 x 2001
Expected size	2520 bp
Size marker	Zt260
	Zt273
	Zt295
	IPO323



Internal PCR control
(GAPDH: Primer 879 x
880, expected size:
207 bp)

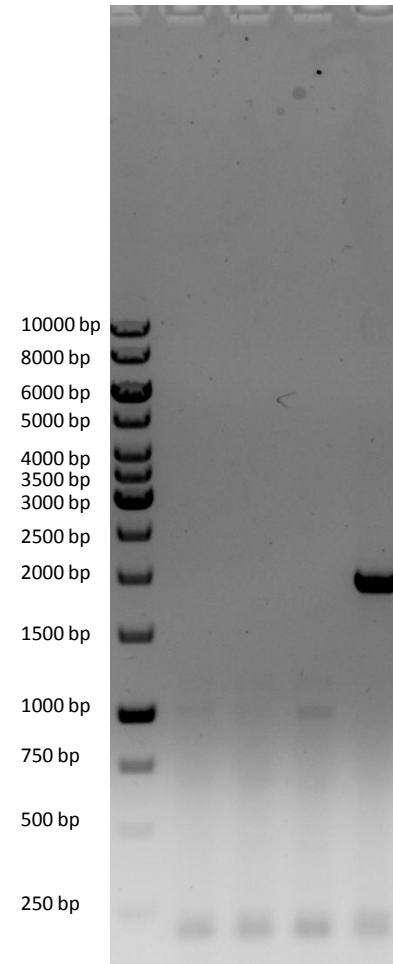
FIG S1 B Gel electrophoresis of PCR along the chromosome 14 for strains that had lost chromosome 14.

Primer-No		2088 x 2089	2090 x 2091
Expected size		250 bp	800 bp
Size marker		Zt291 Zt248 Zt294 IPO323	Zt291 Zt248 Zt294 IPO323



Internal PCR control (GAPDH:
Primer 879 x 880, expected
size: 207 bp)

Primer-No	1998 x 1999
Expected size	1991 bp
Size marker	Zt251 Zt248 Zt294 IPO323



Internal PCR control (GAPDH:
Primer 879 x 880, expected
size: 207 bp)

FIG S1 C Gel electrophoresis of PCR along the chromosome 15 for strains that had lost chromosome 15.

Primer-No	1010 x 1009	2092 x 2093	2094 x 2095
Expected size	104 bp	350 bp	700 bp

Primer-No	1996 x 1997
Expected size	1501 bp

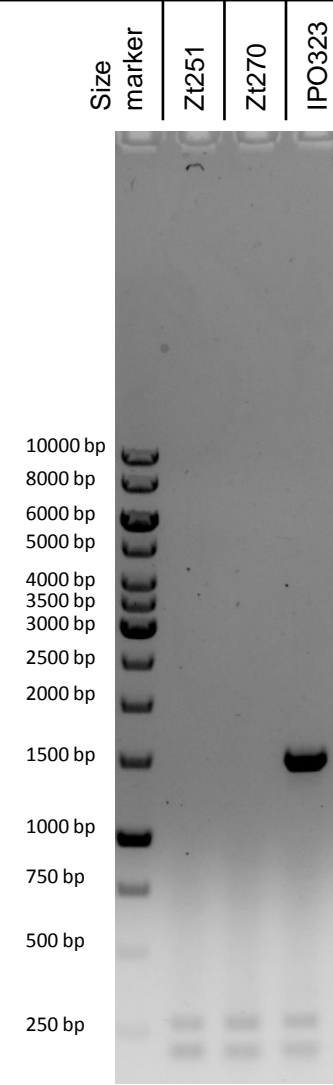
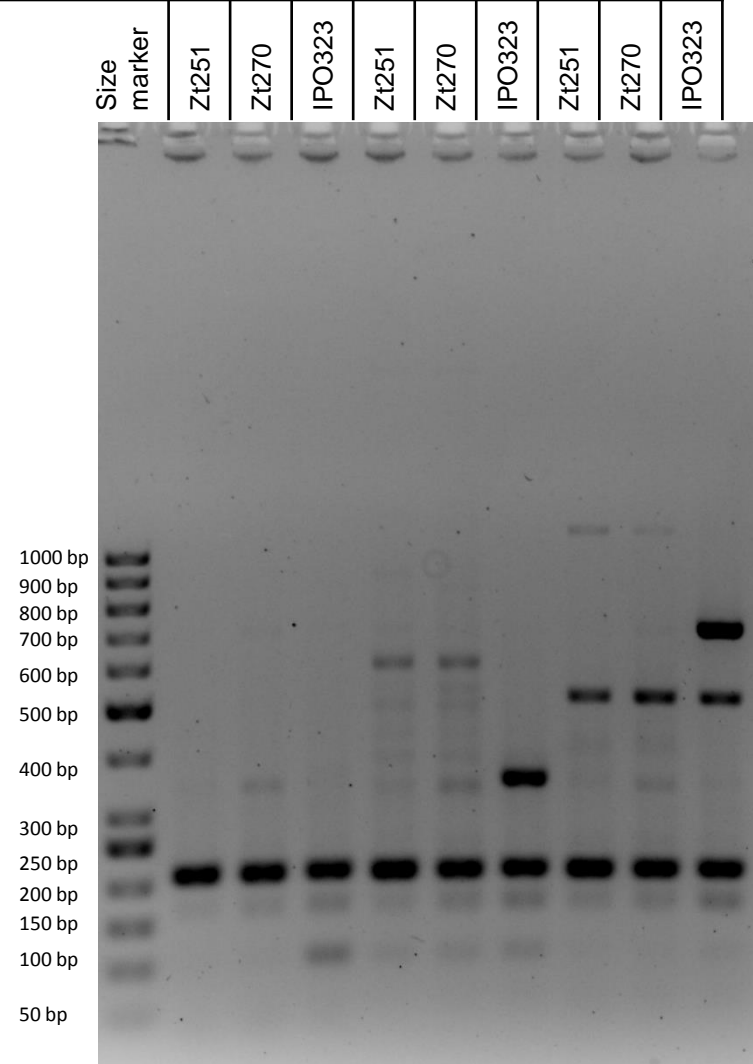


FIG S1 D Gel electrophoresis of PCR along the chromosome 16 for strains that had lost chromosome 16.

Primer-No	1263 x 1264	1995 x 1994	2096 x 2097	2094 x 2095
Expected size	139 bp	1190 bp	450 bp	600 bp

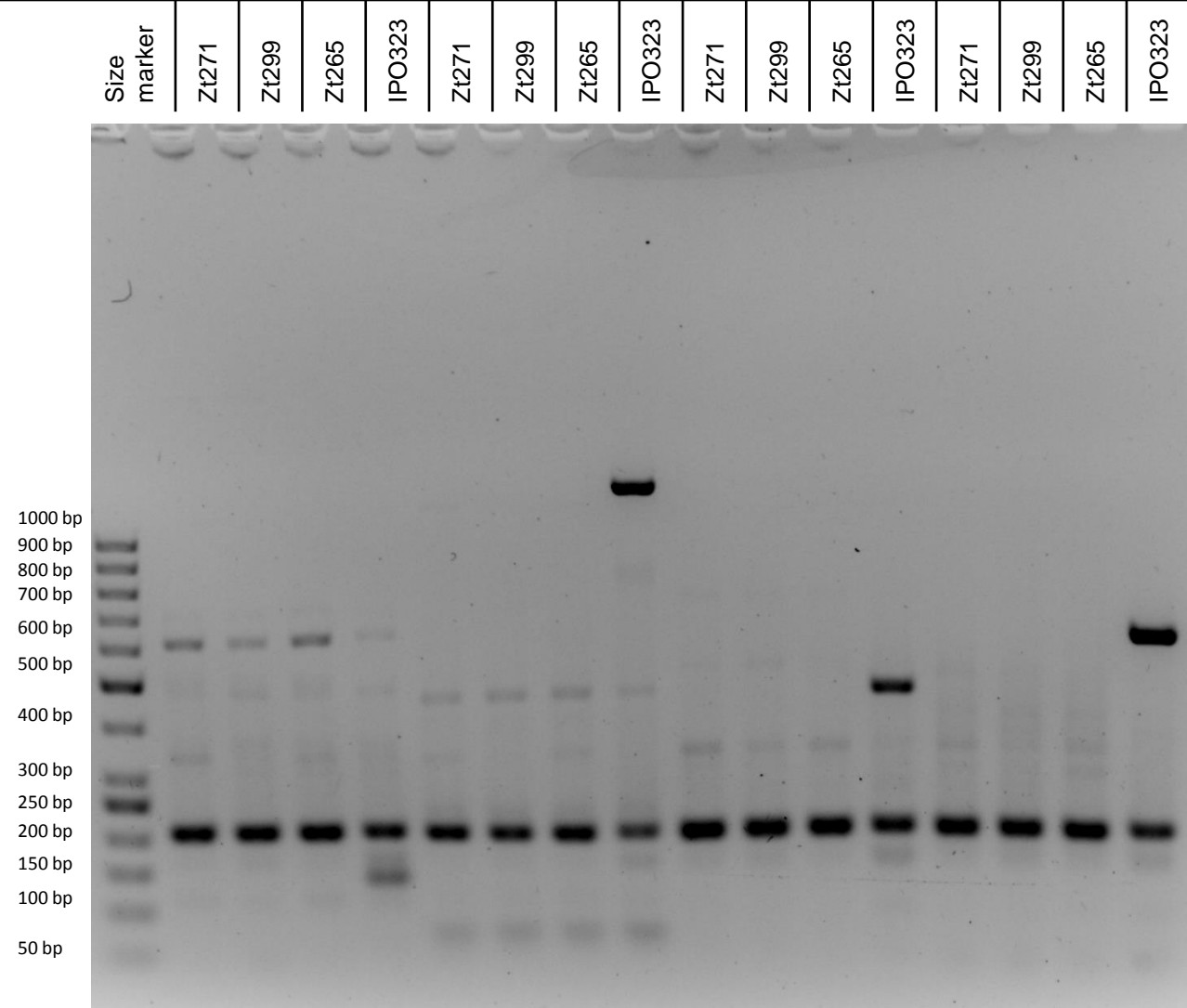
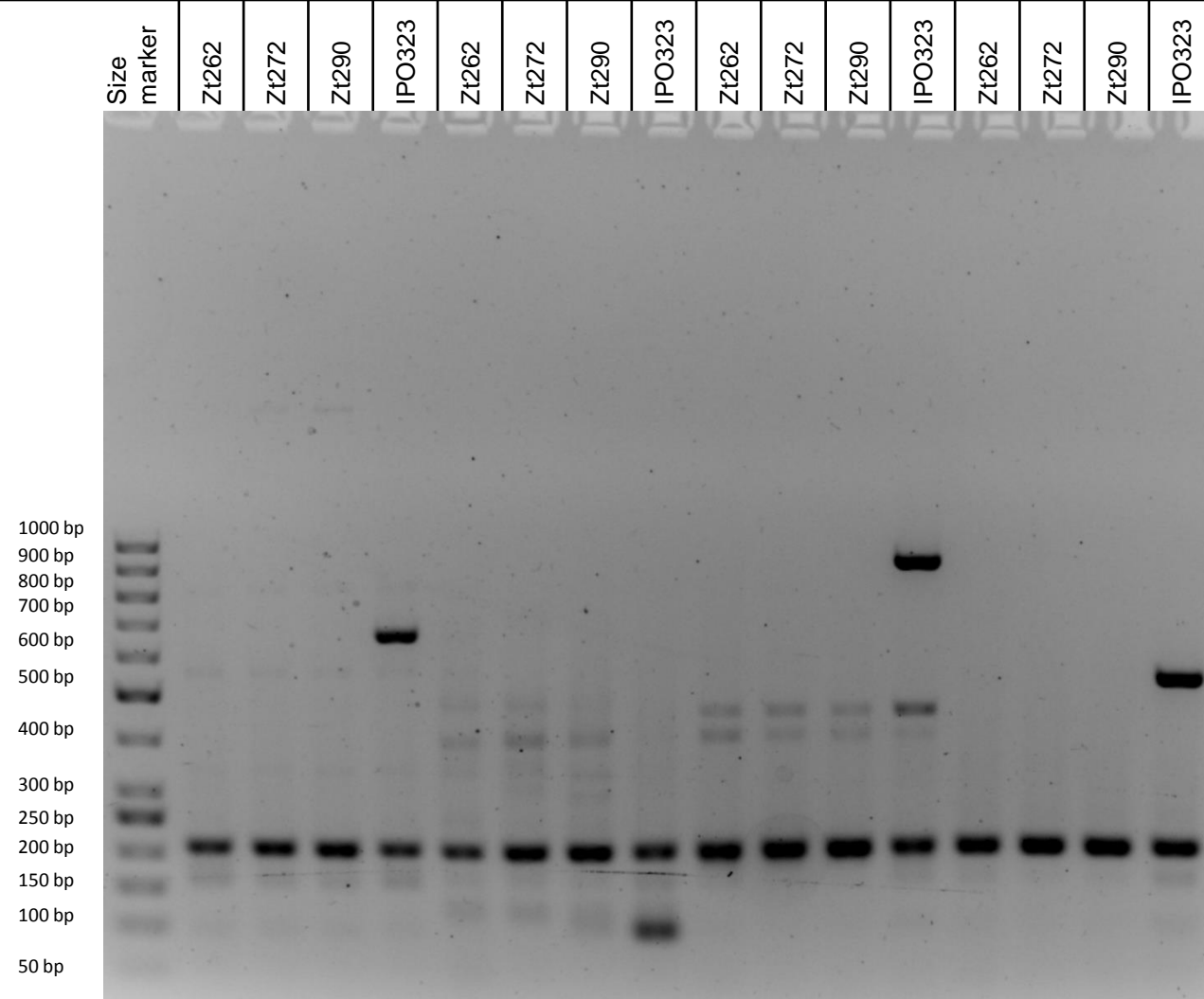


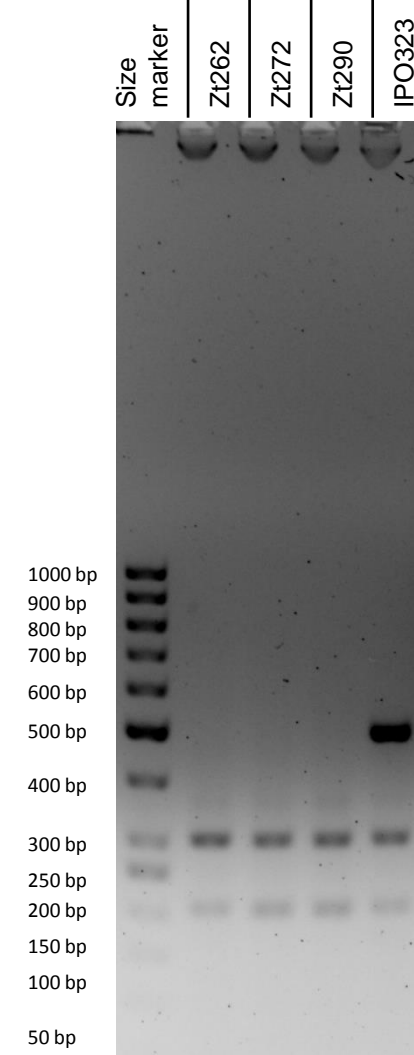
FIG S1 E Gel electrophoresis of PCR along the chromosome 17 for strains that had lost chromosome 17.

Primer-No	311 x 312	1267 x 1268	1992 x 1993	2100 x 2101
Expected size	651 bp	104 bp	908bp	550 bp

Primer-No	2102 x 2103
Expected size	500 bp



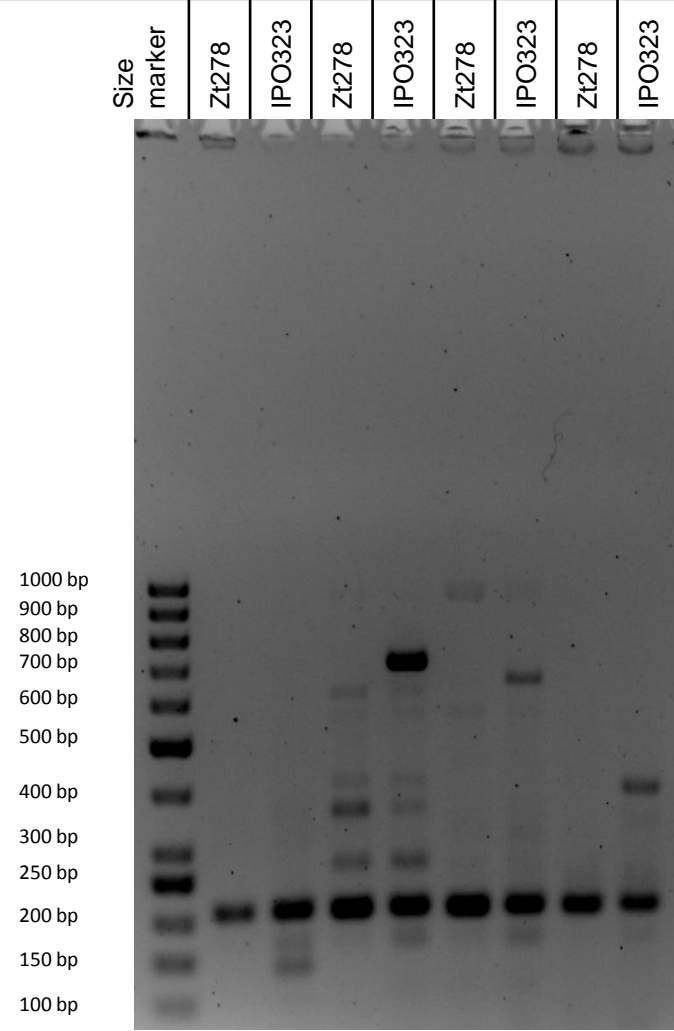
Internal PCR control (GAPDH:
Primer 879 x 880, expected
size: 207 bp)



Internal PCR control (GAPDH:
Primer 879 x 880, expected
size: 207 bp)

FIG S1 F Gel electrophoresis of PCR along the chromosome 18 for strains that had lost chromosome 18.

Primer-No	1271 x 1272	2003 x 2004	2104 x 2105	2106 x 2107
Expected size	140 bp	697 bp	650 bp	400 bp



Internal PCR control (GAPDH:
Primer 879 x 880, expected
size: 207 bp)

FIG S1 G Gel electrophoresis of PCR along the chromosome 19 for strains that had lost chromosome 19.

Primer-No	1276 x 1275	2110 x 2111	2108*2109
Expected size	142 bp	300 bp	750 bp

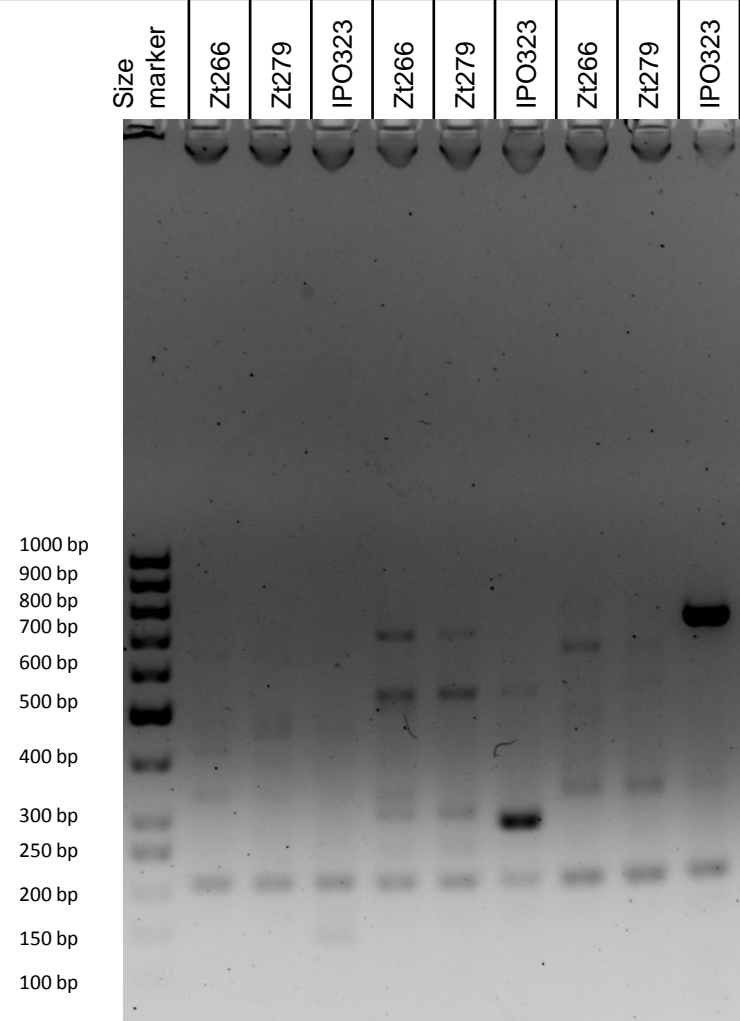


FIG S1 H Gel electrophoresis of PCR along the chromosome 20 for strains that had lost chromosome 20.

Primer-No	1280 x 1279	2108 x 2109	1896 x 1897
Expected size	116 bp	750 bp	415 bp

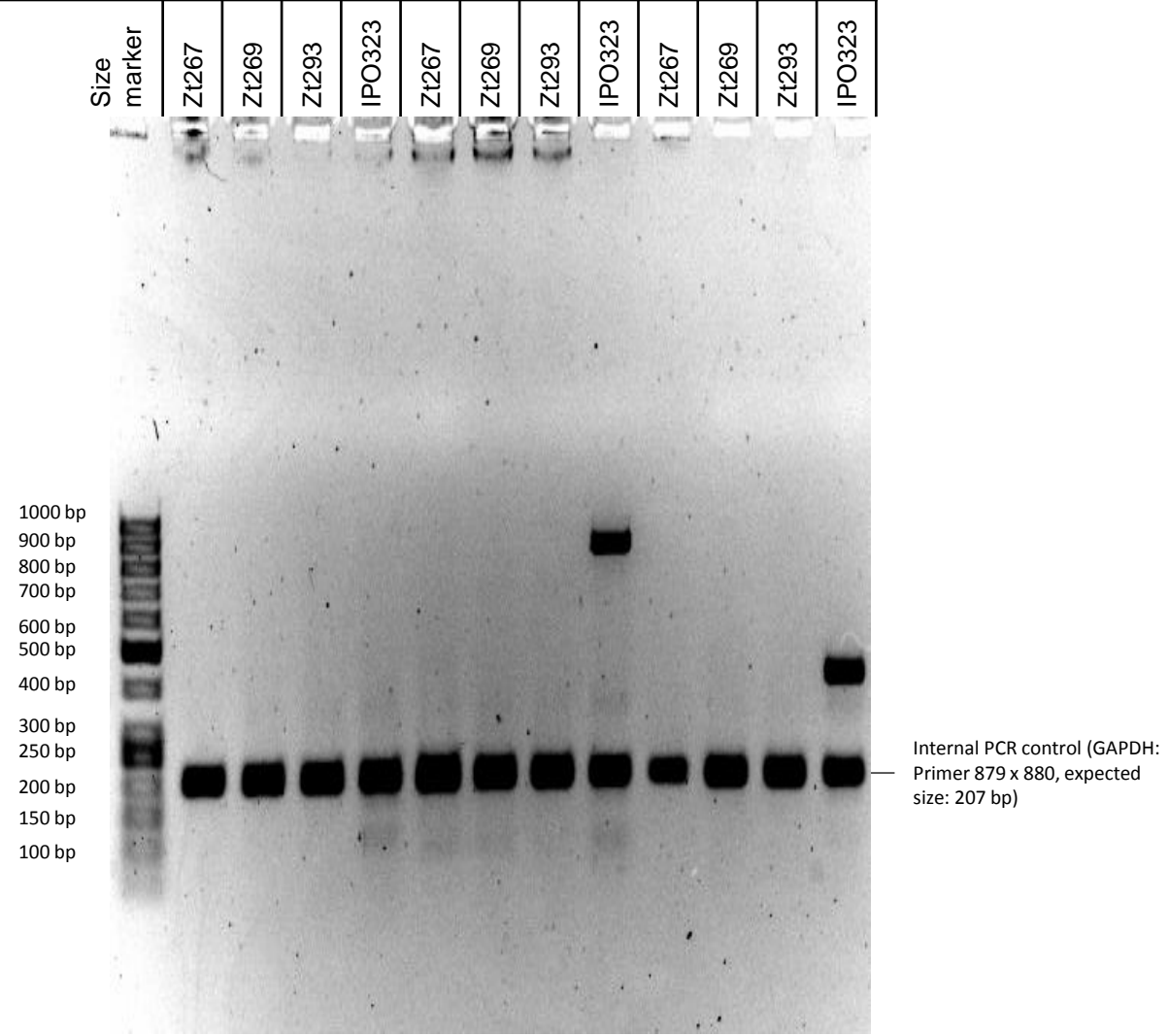


FIG S1 I Gel electrophoresis of PCR along the chromosome 21 for strains that had lost chromosome 21.