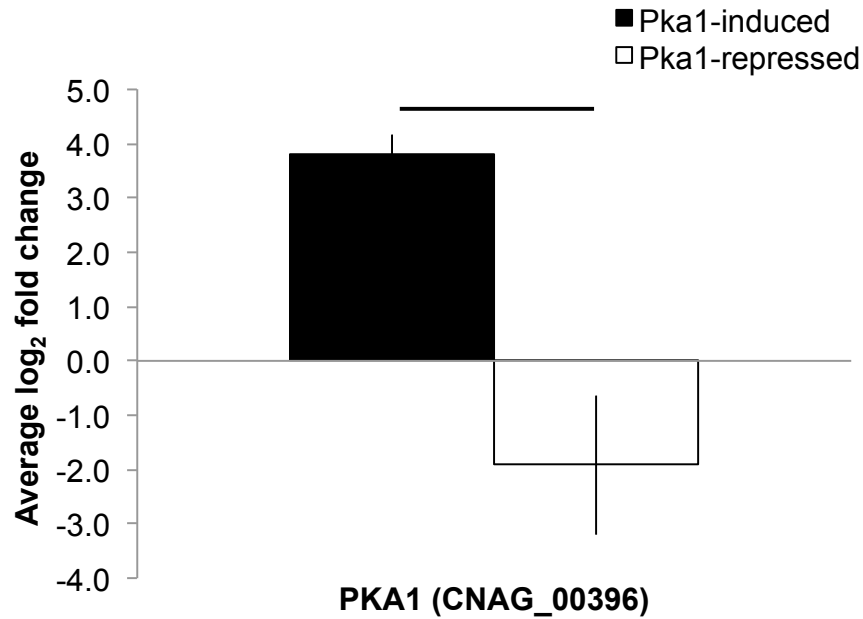
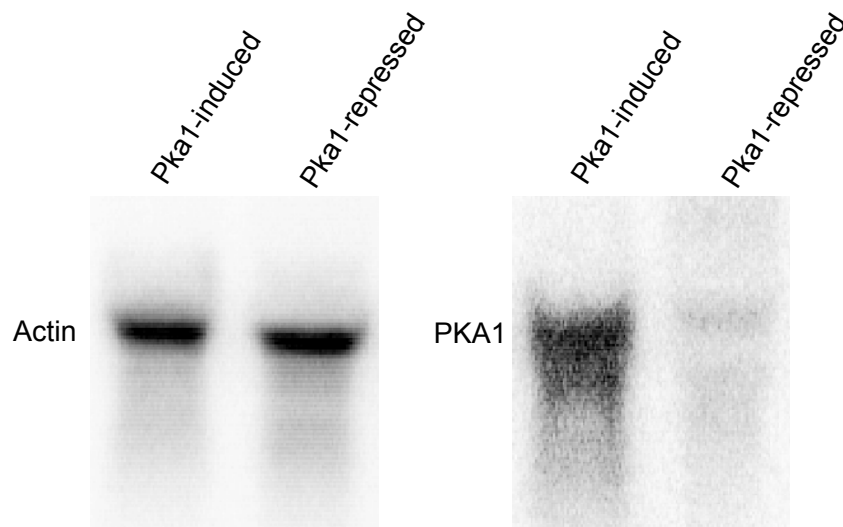


A



B



**Figure S3. RNA expression levels for *PKA1*.** Expression levels at 16 hpi for *PKA1* were measured by A) qRT-PCR in *P<sub>GAL7</sub>::PKA1* and WT strains grown under Pka1-repression (glucose-containing medium) and Pka1-induction (galactose-containing medium). Samples were evaluated in triplicate and the values are reported as average log<sub>2</sub> fold change  $\pm$  standard deviation. Statistical significance was determined using a Student's *t*-test (*p*-value < 0.05) and the line denotes a significant difference between the conditions. B) A Northern blot was performed to validate the qRT-PCR results. RNA was extracted from *P<sub>GAL7</sub>::Pka1* cells grown under Pka1-repression (glucose-containing medium) and Pka1-

induction (galactose-containing medium) conditions for 16 h. Actin was used as a loading control and *PKAI* expression was assessed under the different growth conditions. The results show an up-regulation of *PKAI* mRNA under Pka1-inducing conditions.