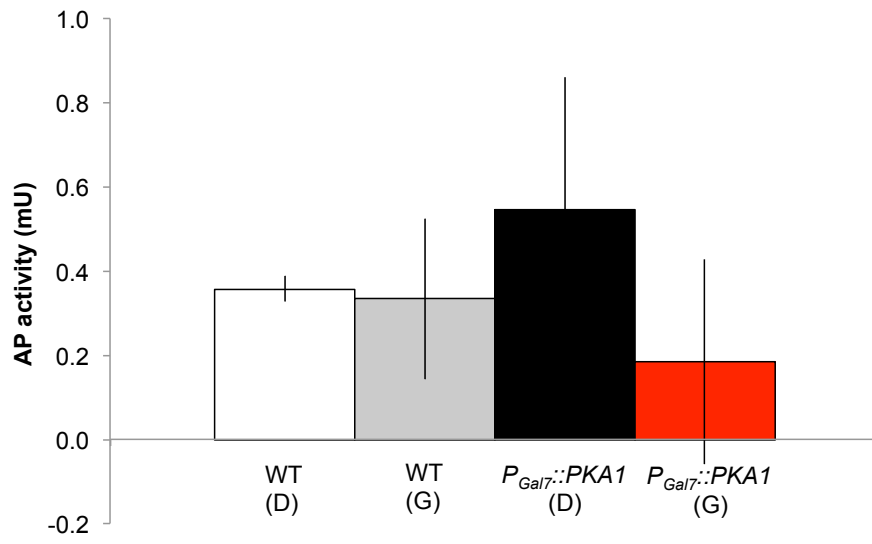
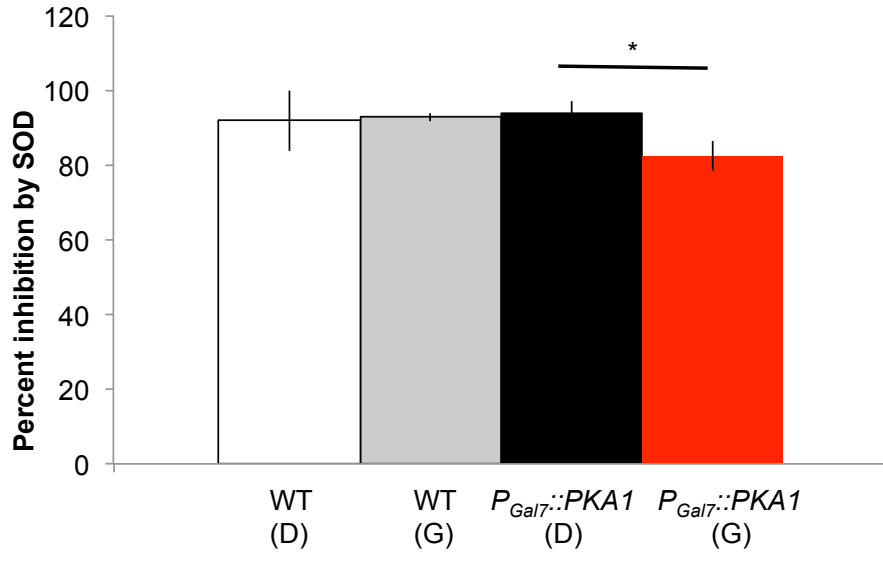


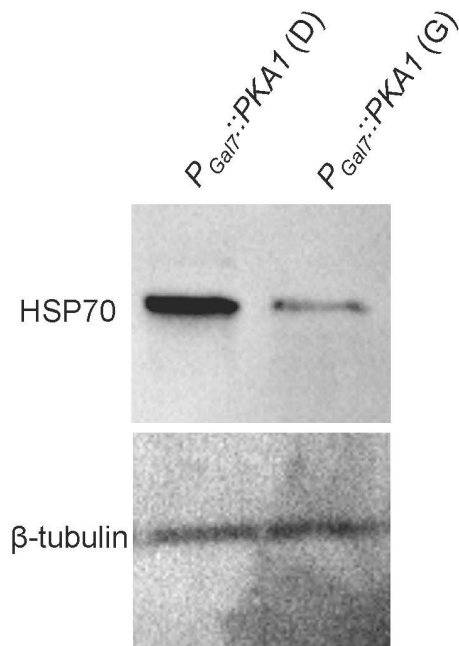
**A**



**B**



C



**Figure S2. Validation of proteomic profiling.** Enzyme activities were measured for phosphatase (A) and superoxide dismutase (SOD) (B) in the WT and  $P_{GAL7}::PKA1$  strains under Pka1-repressed (glucose-containing medium, D) and Pka1-induced (galactose-containing medium, G) conditions. Values are reported as an average  $\pm$  S.D. for three independent replicates. Statistical analysis was performed using a Student's *t*-test (*p*-value < 0.05). \*Denotes a significant difference between the indicated conditions. C) An immunoblot for Hsp70 was performed to validate the proteomic results. Cellular proteins were extracted from  $P_{GAL7}::PKA1$  cells grown under Pka1-repression (glucose-containing medium, D) and Pka1-induction (galactose-containing medium, G) conditions for 16 h.  $\beta$ -tubulin was used as a control and Hsp70 protein abundance was assessed under the different growth conditions. The results show a decrease in abundance of Hsp70 under the Pka1-induced condition.