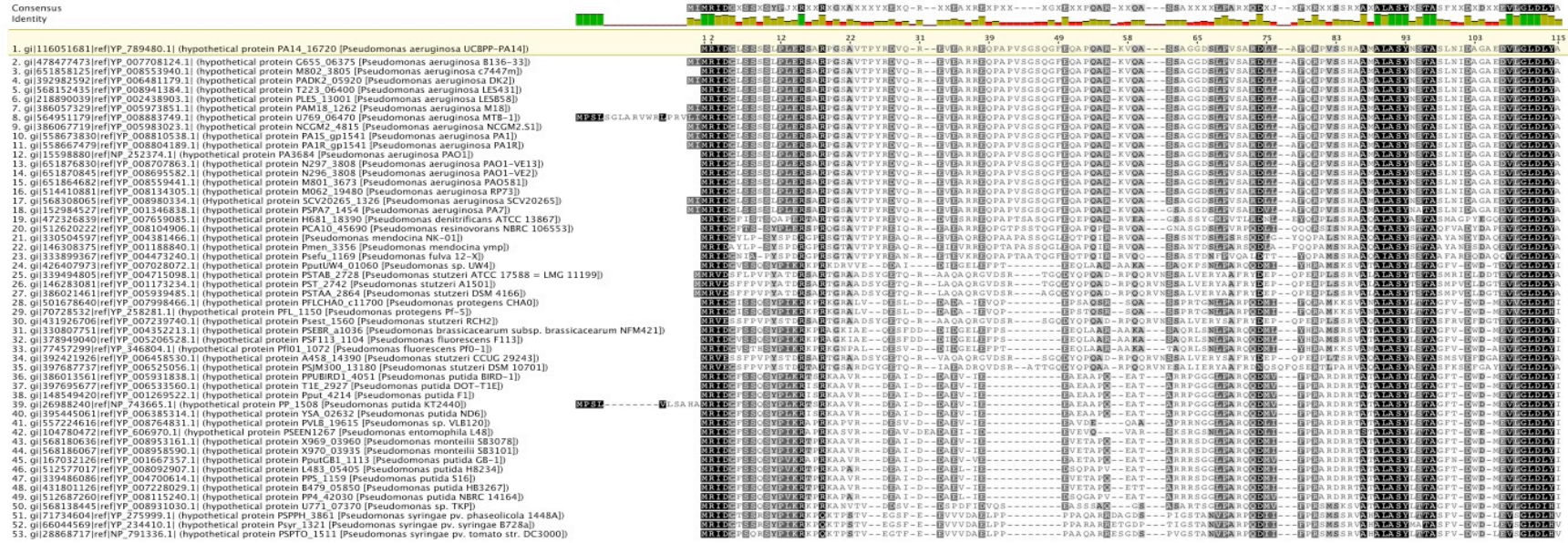
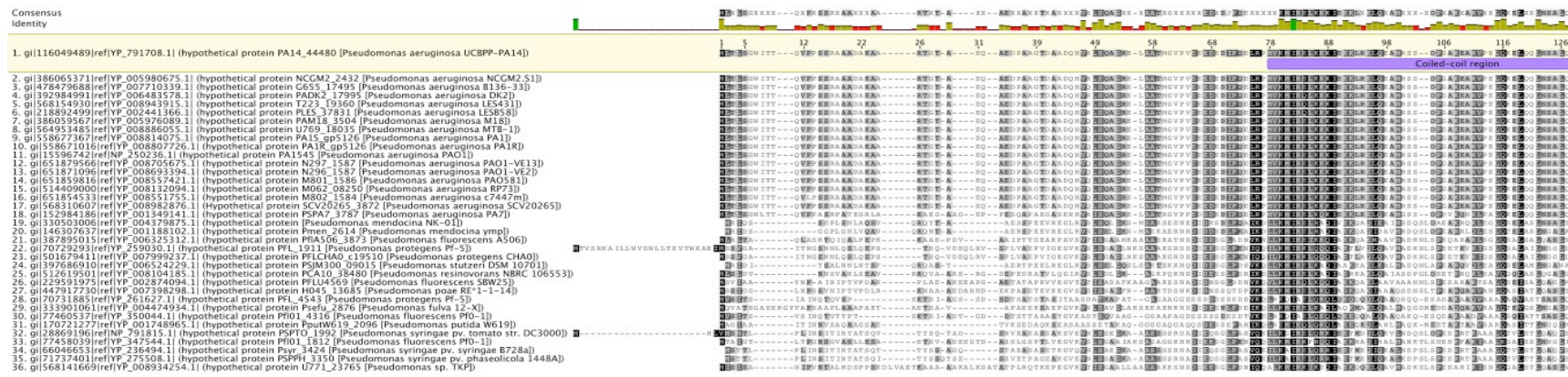


Supplementary Figure S4. Alignments of PemA and PemB homologs from the *Pseudomonas* genus

A



B



Supplementary Figure S4: Alignments of PemA and PemB homologs in the *Pseudomonas* genus from the NCBI reference sequence database (RefSeq). PemA and PemB are highlighted in yellow, and the coiled-coil domain in PemB is annotated in purple. Shades of residues represent their conservation.