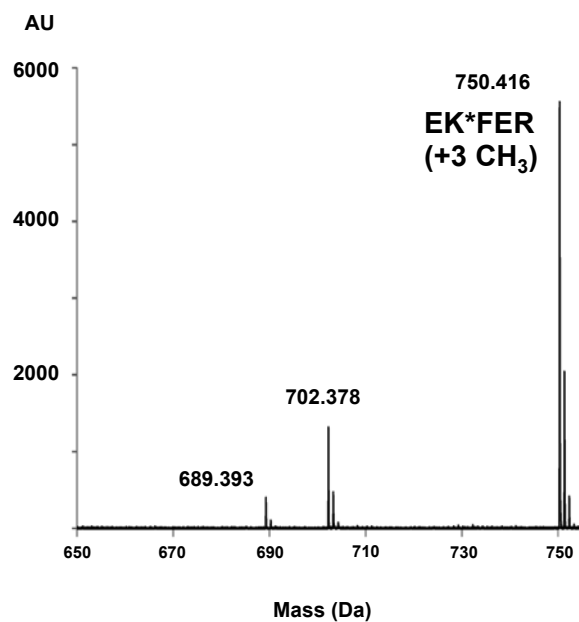


1 **SUPPLEMENTAL MATERIAL**



17 **Fig. S1.** Tandem mass spectrometry analysis of *P. aeruginosa* EF-Tu purified from
18 *E. coli* harboring a plasmid expressing *eftM* and digested with trypsin. Figure
19 shows the EF-Tu derived peptide that is modified with three methyl groups due to
20 *P. aeruginosa* EftM.