

**CONTENTS • JANUARY/FEBRUARY 2012 • VOLUME 3, NO. 1**

**EDITORIAL**

- The H5N1 Manuscript Redaction Controversy** e00022-12  
*Arturo Casadevall and Thomas Shenk*

**COMMENTARY**

- A Single Chromosome Unexpectedly Links Highly Divergent Isolates of *Toxoplasma gondii*** e00284-11  
*Katelyn A. Walzer and Jon P. Boyle*

- Science Should Be in the Public Domain** e00004-12  
*Vincent R. Racaniello*

- Mammalian-Transmissible H5N1 Influenza: the Dilemma of Dual-Use Research** e00005-12  
*Robert G. Webster*

- The NSABB Recommendations: Rationale, Impact, and Implications** e00021-12  
*Paul S. Keim*

- Role of Complement in Dengue Virus Infection: Protection or Pathogenesis?** e00003-12  
*Sujan Shresta*

- A Microbial Association with Autism** e00019-12  
*Jorge L. Benach, Ellen Li, and Margaret M. McGovern*

**RESEARCH ARTICLE**

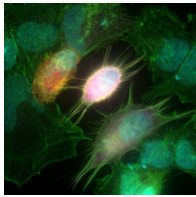
- Sur7 Promotes Plasma Membrane Organization and Is Needed for Resistance to Stressful Conditions and to the Invasive Growth and Virulence of *Candida albicans*** e00254-11  
*Lois M. Douglas, Hong X. Wang, Sabine Keppler-Ross, Neta Dean, and James B. Konopka*

- The KGD Motif of Epstein-Barr Virus gH/gL Is Bifunctional, Orchestrating Infection of B Cells and Epithelial Cells** e00290-11  
*Jia Chen, Cynthia L. Rowe, Theodore S. Jardetzky, and Richard Longnecker*

- Leukocyte Inflammatory Responses Provoked by Pneumococcal Sialidase** e00220-11  
*Yung-Chi Chang, Satoshi Uchiyama, Ajit Varki, and Victor Nizet*

- The Novel Sigma Factor-Like Regulator RpoQ Controls Luminescence, Chitinase Activity, and Motility in *Vibrio fischeri*** e00285-11  
*Xiaodan Cao, Sarah V. Studer, Karen Wassarman, Yuanxing Zhang, Edward G. Ruby, and Tim Miyashiro*

- Application of Novel PCR-Based Methods for Detection, Quantitation, and Phylogenetic Characterization of *Sutterella* Species in Intestinal Biopsy Samples from Children with Autism and Gastrointestinal Disturbances** e00261-11  
*Brent L. Williams, Mady Hornig, Tanmay Parekh, and W. Ian Lipkin*



*Featured image:* Bacterial RhoGEFs are active in the presence of the mammalian RhoGEF inhibitor EspH. Immunofluorescence microscopy of HeLa cells cotransfected with Myc-tagged Map (magenta) or RFP-EspH (red), and stained for F actin (green) and nuclei (cyan). Map is a bacterial Cdc42 GEF that induces filopodia formation, while EspH promiscuously binds and inhibits mammalian RhoGEFs, leading to cell rounding. When coexpressed, filopodia are still evident, showing that Map is insensitive to the inhibitory effects of EspH. [See related article: A. R. C. Wong et al., mBio 3(1): e00250-11, 2012.] (Copyright © 2012, Wong et al. All Rights Reserved.)

<b>The Interplay between the <i>Escherichia coli</i> Rho Guanine Nucleotide Exchange Factor Effectors and the Mammalian RhoGEF Inhibitor EspH</b>	<b>e00250-11</b>
<i>Alexander R. C. Wong, Abigail Clements, Benoit Raymond, Valerie F. Crepin, and Gad Frankel</i>	
<b>Roles of the Nuclear Lamina in Stable Nuclear Association and Assembly of a Herpesviral Transactivator Complex on Viral Immediate-Early Genes</b>	<b>e00300-11</b>
<i>Lindsey Silva, Hyung Suk Oh, Lynne Chang, Zhipeng Yan, Steven J. Triezenberg, and David M. Knipe</i>	
<b>Life and Death of Deep-Sea Vents: Bacterial Diversity and Ecosystem Succession on Inactive Hydrothermal Sulfides</b>	<b>e00279-11</b>
<i>Jason B. Sylvan, Brandy M. Toner, and Katrina J. Edwards</i>	
<b>Novel Transporter Required for Biogenesis of <i>cbb</i><sub>3</sub>-Type Cytochrome <i>c</i> Oxidase in <i>Rhodobacter capsulatus</i></b>	<b>e00293-11</b>
<i>Seda Ekici, Honghui Yang, Hans-Georg Koch, and Fevzi Daldal</i>	
<b>Natural Competence Is a Major Mechanism for Horizontal DNA Transfer in the Oral Pathogen <i>Porphyromonas gingivalis</i></b>	<b>e00231-11</b>
<i>Gena D. Tribble, Todd W. Rigney, Doan-Hieu V. Dao, Cindy T. Wong, Jennifer E. Kerr, Brendan E. Taylor, Sara Pacha, and Heidi B. Kaplan</i>	
<b>Host Cell Nucleolin Is Required To Maintain the Architecture of Human Cytomegalovirus Replication Compartments</b>	<b>e00301-11</b>
<i>Blair L. Strang, Steeve Boulant, Tomas Kirchhausen, and Donald M. Coen</i>	
<b>Kinetics of Uropathogenic <i>Escherichia coli</i> Metapopulation Movement during Urinary Tract Infection</b>	<b>e00303-11</b>
<i>Matthew S. Walters, M. Chelsea Lane, Patrick D. Vigil, Sara N. Smith, Seth T. Walk, and Harry L. T. Mobley</i>	
<b>A Critical Phenylalanine Residue in the Respiratory Syncytial Virus Fusion Protein Cytoplasmic Tail Mediates Assembly of Internal Viral Proteins into Viral Filaments and Particles</b>	<b>e00270-11</b>
<i>Fyza Y. Shaikh, Reagan G. Cox, Aaron W. Lifland, Anne L. Hotard, John V. Williams, Martin L. Moore, Philip J. Santangelo, and James E. Crowe, Jr.</i>	
<b>Insight into the Transmission Biology and Species-Specific Functional Capabilities of Tsetse (Diptera: Glossinidae) Obligate Symbiont <i>Wigglesworthia</i></b>	<b>e00240-11</b>
<i>Rita V. M. Rio, Rebecca E. Symula, Jingwen Wang, Claudia Lohs, Yi-neng Wu, Anna K. Snyder, Robert D. Bjornson, Kenshiro Oshima, Bryan S. Biehl, Nicole T. Perna, Masahira Hattori, and Serap Aksoy</i>	
<b>A New Means To Identify Type 3 Secreted Effectors: Functionally Interchangeable Class IB Chaperones Recognize a Conserved Sequence</b>	<b>e00243-11</b>
<i>Sonia C. P. Costa, Alexa M. Schmitz, Fathima F. Jahufar, Justin D. Boyd, Min Y. Cho, Marcie A. Glicksman, and Cammie F. Lesser</i>	

***Staphylococcus aureus* CC398: Host Adaptation and Emergence of Methicillin Resistance in Livestock** **e00305-11**

Lance B. Price, Marc Stegger, Henrik Hasman, Maliha Aziz, Jesper Larsen, Paal Skytt Andersen, Talima Pearson, Andrew E. Waters, Jeffrey T. Foster, James Schupp, John Gillece, Elizabeth Driebe, Cindy M. Liu, Burkhard Springer, Irena Zdovc, Antonio Battisti, Alessia Franco, Jacek Żmudzki, Stefan Schwarz, Patrick Butaye, Eric Jouy, Constanca Pomba, M. Concepción Porrero, Raymond Ruimy, Tara C. Smith, D. Ashley Robinson, J. Scott Weese, Carmen Sofia Arriola, Fangyou Yu, Frederic Laurent, Paul Keim, Robert Skov, and Frank M. Aarestrup

**A Glycosylphosphatidylinositol Anchor Is Required for Membrane Localization but Dispensable for Cell Wall Association of Chitin Deacetylase 2 in *Cryptococcus neoformans*** **e00007-12**

Nicole M. Gilbert, Lorina G. Baker, Charles A. Specht, and Jennifer K. Lodge

**Anaerobic Decomposition of Switchgrass by Tropical Soil-Derived Feedstock-Adapted Consortia** **e00249-11**

Kristen M. DeAngelis, Julian L. Fortney, Sharon Borglin, Whendee L. Silver, Blake A. Simmons, and Terry C. Hazen

**Comparative Genomics of Enterococci: Variation in *Enterococcus faecalis*, Clade Structure in *E. faecium*, and Defining Characteristics of *E. gallinarum* and *E. casseliflavus*** **e00318-11**

Kelli L. Palmer, Paul Godfrey, Allison Griggs, Veronica N. Kos, Jeremy Zucker, Christopher Desjardins, Gustavo Cerqueira, Dirk Gevers, Suzanne Walker, Jennifer Wortman, Michael Feldgarden, Brian Haas, Bruce Birren, and Michael S. Gilmore