



## Erratum for Kumar et al., “Indole Signaling at the Host-Microbiota-Pathogen Interface”

 Aman Kumar,<sup>a,b</sup> Vanessa Sperandio<sup>a,b</sup>

<sup>a</sup>Department of Microbiology, University of Texas Southwestern Medical Center, Dallas, Texas, USA

<sup>b</sup>Department of Biochemistry, University of Texas Southwestern Medical Center, Dallas, Texas, USA

Volume 10, no. 3, e01031-19, 2019, <https://doi.org/10.1128/mBio.01031-19>. The wild-type (WT) control group represented in Fig. 5D for the expression of *cpxR* was inadvertently duplicated from WT controls of *espA* from Fig. 5C. Figure 5D is corrected below. The changes do not affect any of the results of the study. The corrected figure version of Fig. 5 is shown here.

**Citation** Kumar A, Sperandio V. 2020. Erratum for Kumar et al., “Indole signaling at the host-microbiota-pathogen interface.” mBio 11:e03318-19. <https://doi.org/10.1128/mBio.03318-19>.

**Copyright** © 2020 Kumar and Sperandio. This is an open-access article distributed under the terms of the [Creative Commons Attribution 4.0 International license](https://creativecommons.org/licenses/by/4.0/).

Address correspondence to Vanessa Sperandio, [vanessa.sperandio@utsouthwestern.edu](mailto:vanessa.sperandio@utsouthwestern.edu).

**Published** 4 February 2020

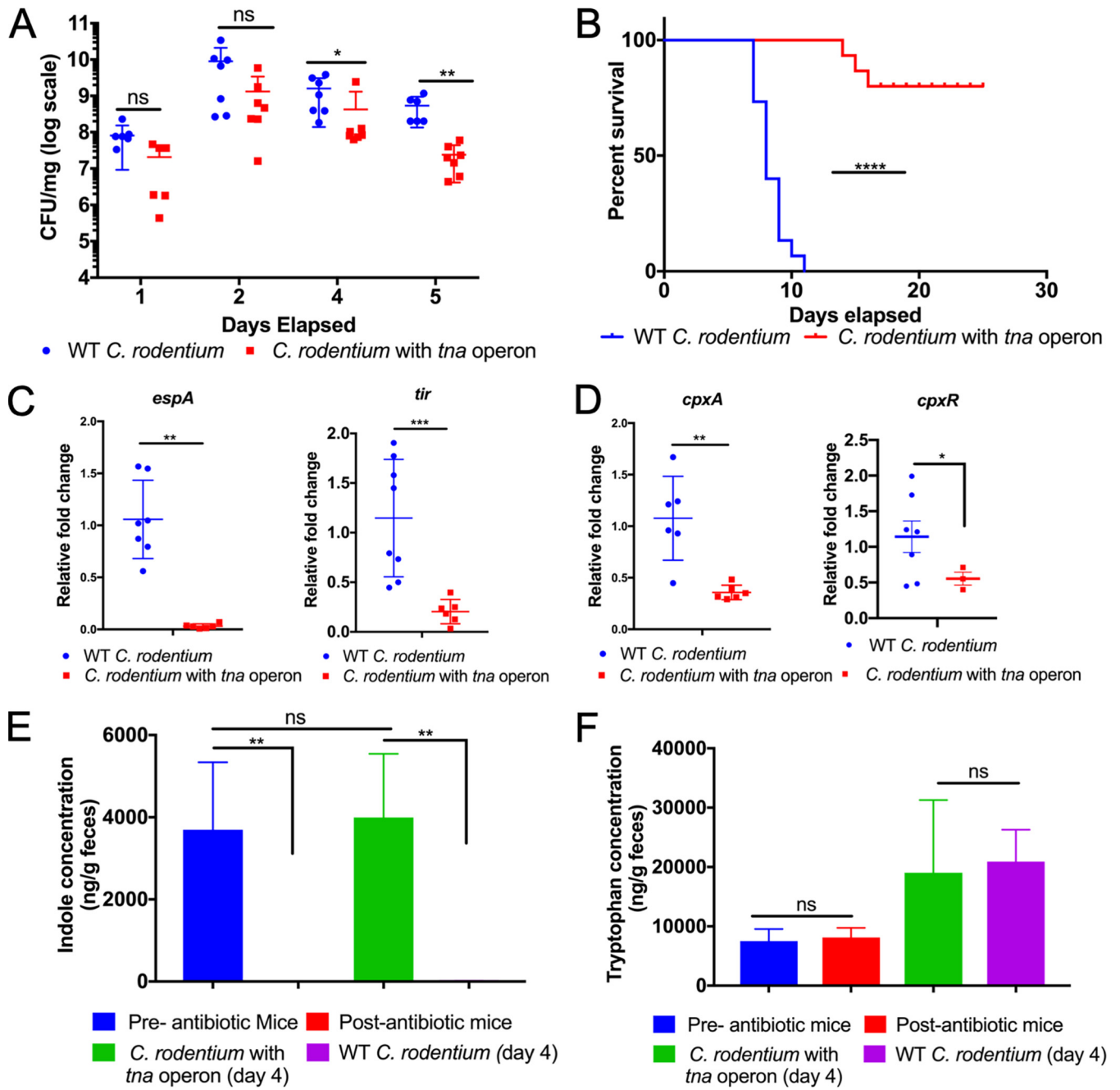


FIG 5 Indole limits *C. rodentium* colonization and pathogenesis in mice.