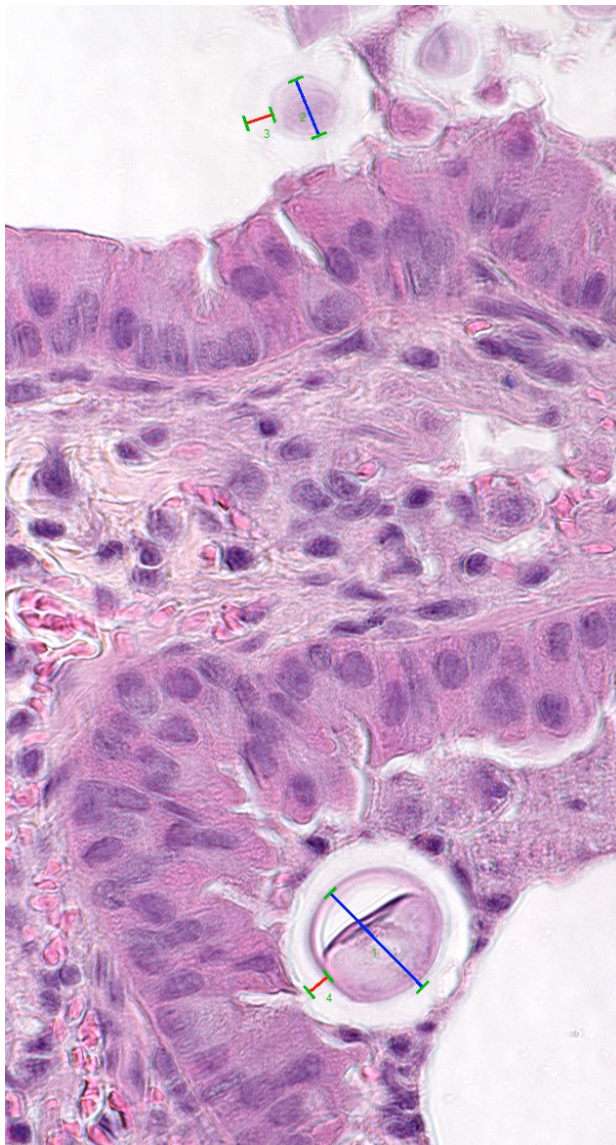


A.



B.

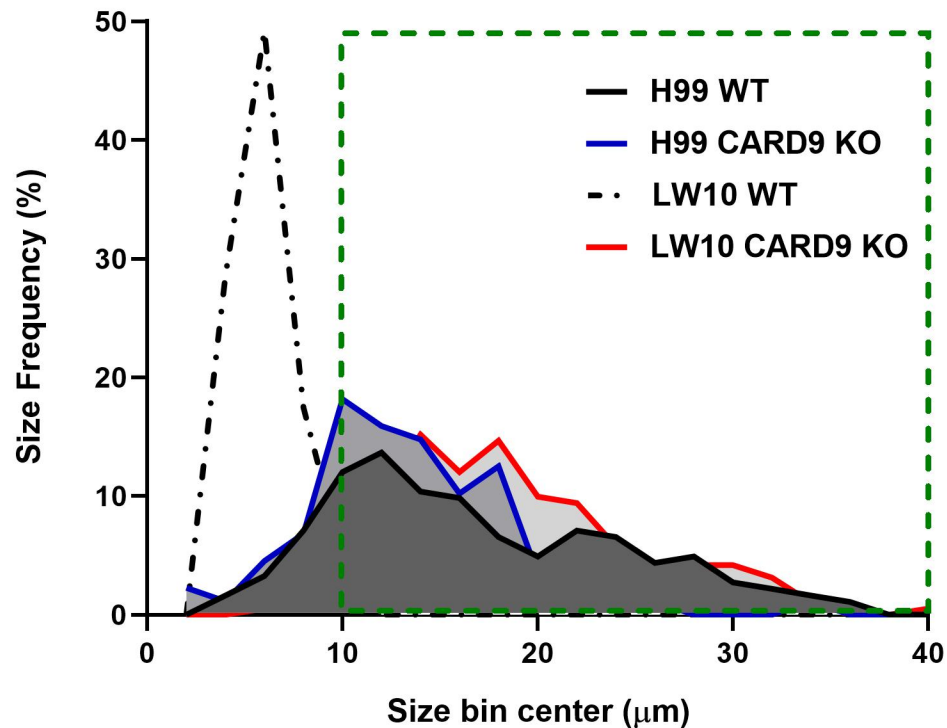


Figure S3. A) Morphometry measures for cell diameter (blue) and capsule size (red) were conducted in set of images taken from the lung sections and calculated and performed at the randomized fields ($n=4$ mice per group). B) Frequency plot illustrates distribution of diameters sorted using frequency distribution analysis tool in Prism 8.1 in 2 micrometers increment bins and illustrated as histograms. Green dotted area represents cell size consistent with Titan Cell.