

Figure S1

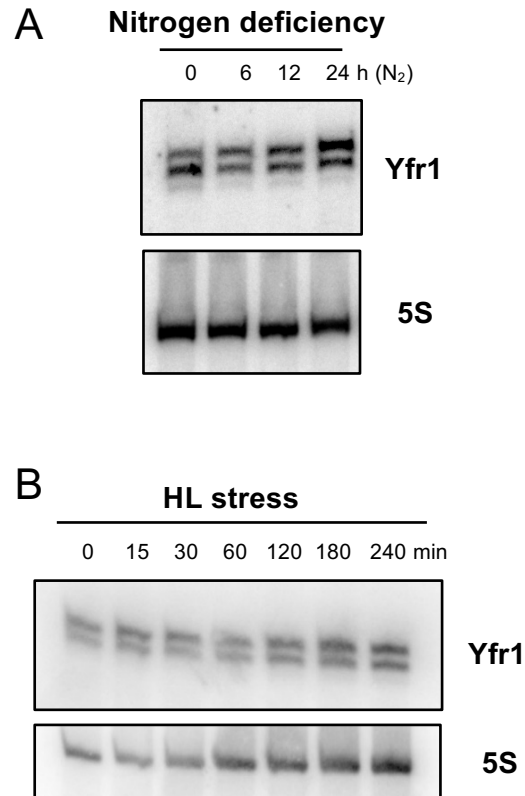


Figure S1. Expression of Yfr1 in *Nostoc* sp. PCC 7120. (A) Northern blot analysis with total RNA extracted at different times after removal of combined nitrogen. (B) Northern blot analysis with total RNA from cells growing in the presence of ammonia at $50 \mu\text{E m}^{-2} \text{s}^{-1}$ and incubated at $500 \mu\text{E m}^{-2} \text{s}^{-1}$ (high light stress, HL) for the indicated times. All membranes were hybridized with probes for Yfr1 and 5S RNA as loading control.