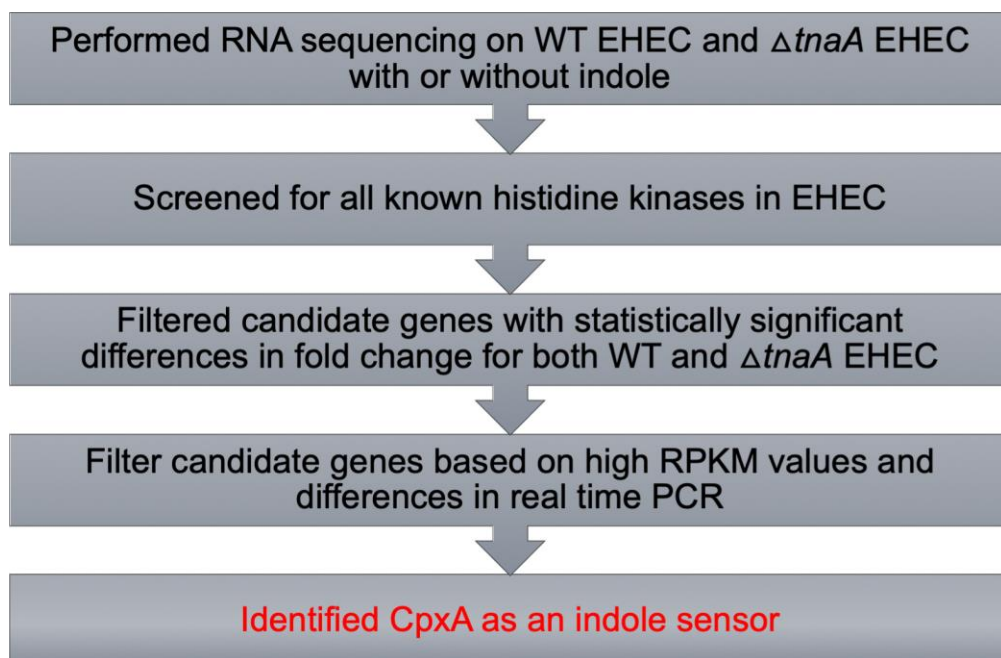


A



B

	Linear total RPKM				Fold Change		p-value	
	TI	T	WI	W	WI vs W	TI vs T	WI vs W	TI vs T
<i>uhpB</i>	1.43	2.15	2.66	2.64	1.01	0.67	0.976	0.285
<i>narX</i>	18.92	21.37	28.26	27.56	1.03	0.89	0.865	0.558
<i>basS</i>	7.79	11.99	13.55	15.75	0.86	0.65	0.709	0.423
<i>envZ</i>	14.61	14.97	19.49	23.19	0.84	0.98	0.484	0.939
<i>baeS</i>	10.98	13.89	13.26	14.55	0.91	0.79	0.453	0.075
<i>rscC</i>	355.36	538.14	522.42	446.80	1.17	0.66	0.407	0.301
<i>arcB</i>	210.80	274.98	322.44	272.59	1.18	0.77	0.388	0.041
<i>dcuS</i>	12.72	27.11	43.80	70.46	0.62	0.47	0.175	0.231
<i>yehU</i>	21.95	35.72	42.67	52.66	0.81	0.61	0.165	0.056
<i>cheA</i>	0.91	1.28	1.47	2.38	0.62	0.71	0.162	0.200
<i>glnG</i>	20.51	31.58	21.81	29.61	0.74	0.65	0.141	0.030
<i>evgS</i>	11.39	32.59	32.08	47.87	0.67	0.35	0.115	0.137
<i>kdpD</i>	42.72	18.25	25.89	17.78	1.46	2.34	0.098	0.020
<i>cusA</i>	4.93	4.37	3.14	5.62	0.56	1.13	0.095	0.425
<i>narQ</i>	11.88	17.25	15.66	29.86	0.52	0.69	0.071	0.461
<i>phoP</i>	87.96	64.70	145.94	82.29	1.77	1.36	0.067	0.057
<i>phoQ</i>	20.14	35.63	33.70	54.90	0.61	0.57	0.053	0.145
<i>torS</i>	3.10	5.52	5.05	11.26	0.45	0.56	0.036	0.113
<i>creC</i>	5.43	10.03	9.50	12.62	0.75	0.54	0.033	0.040
<i>yojN</i>	15.93	43.87	22.63	38.63	0.59	0.36	0.029	0.012
<i>rstB</i>	20.90	29.71	18.78	39.13	0.48	0.70	0.028	0.395
<i>barA</i>	6.75	20.96	14.98	31.61	0.47	0.32	0.023	0.035
<i>cpxA</i>	29.30	63.59	58.24	109.42	0.53	0.46	0.019	0.021
<i>hydH</i>	65.16	56.27	100.41	44.37	2.26	1.16	0.004	0.545

FIG S3. CpxA identified as an indole sensor. (A) Flowchart showing the method used to screen for candidate indole sensor. (B) List of all known histidine kinases of EHEC. RNA sequencing

experiment was performed anaerobically with WT and $\Delta tnaA$ EHEC in the presence or absence of indole. Based on reads per kilobase million (RKPM) values and statistical analysis, *cpxA* was identified as a candidate gene differentially regulated in the presence of indole. RNA seq results were analysed in ArrayStar. Statistical significance was calculated using Student's t-test followed by FDR (Benjamini Hochberg) correction. A p-value of less than 0.05 was considered significant.