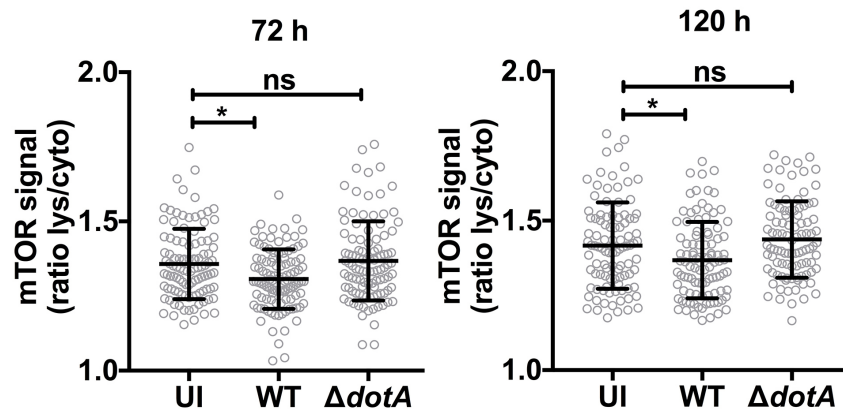


SUPPLEMENTAL FIGURES



Supplemental Figure 1. *C. burnetii* inhibition of mTOR endolysosomal localization is T4BSS-dependent. Subcellular localization of mTOR in HeLa cells left uninfected (UI) or infected with wild-type *C. burnetii* (WT) or the $\Delta dotA$ mutant for 72 h (left) or 120 h (right) in complete medium. The plot depicts mean \pm standard deviation for the ratio of lysosomal (CD63⁺) to cytosolic (lys/cyto) mTOR signal (N > 100 cells). Data are representative of three independent experiments. Asterisks indicate statistical significance (* $P < 0.05$).